

## Diesel Generating Set TNCS-30G1

50Hz

### General Features

- Engine 4B3.9-G1 Cummins Made in China
- Alternator PI144F/22KW Stamford Made in China
- Controller DSE7320 Deepsea Made in UK



- Electric speed control
- 24v starting batteries, maintenance-free type, connecting cables
- Equipped with CHINT MCCB; ABB in Option
- Equipped with industrial silencer and flexible exhaust hose
- Radiator 40°C max, fans are driven by belt with safety guard

- 24v charge dynamo
- Equipped with 8-hours operation base tank
- Design comply to ISO8528/GB2820
- Absorber (anti instant braking)
- User manual, Packing list

### General Ratings

Voltage	Power				Frequency (Hz)	Phase	P.F (COSϕ)	Prime Current (A)
	Prime		Standby					
	kw	kva	kw	kva				
220/380V	22.0	27.5	24.2	30.3	50	3	0.8	41.8
230/400V	22.0	27.5	24.2	30.3	50	3	0.8	39.7
240/415V	22.0	27.5	24.2	30.3	50	3	0.8	38.3
254/440V	22.0	27.5	24.2	30.3	50	3	0.8	36.1

#### Prime power

This rating is for the supply of continuous electrical power at variable load. A 10% overload capability is available for a period of 1 hour within each 12-hour period of operation.

#### Standby power

This rating is for the supply of continuous electrical power at variable load in the event of utility power failure. No overload is permitted.

#### Rated voltage

Available with customers requirements.

### Sales Promise

TANON POWER provides a full line of 100% brand new and high quality products.

Each and every unit is strictly factory tested before delivery.

Warranty is according to below standard conditions, subject to the earlier one.

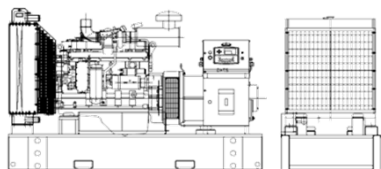
1. 13 months, counted on the date of Bill of lading
2. One year after installation.
3. 1000 running hours.

Service and parts are available from TANON or distributors in your location.

### Dimension And Weight

#### Open frame

Size(L\*W\*H):1750\*800\*1350(mm)  
N.W.:750 (kgs)



#### Silent with Canopy

Size(L\*W\*H):2280\*950\*1510(mm)  
N.W.:1100 (kgs)



**Engine Specifications**

1	Engine model	4B3.9-G1
2	Engine manufacturer	DCEC (China Dongfeng)
3	Number of cylinders	4
4	Cylinder arrangement	Vertical in line
5	Cycle	4 stroke
6	Aspiration	Natural
7	Bore×Stroke(mm×mm)	102×120
8	Displacement (Liter)	3.9
9	Compression Ratio	16.5:1
10	Prime power/speed (kW/RPM)	24/1500RPM
11	Standby power/speed (kW/RPM)	27/1500RPM
12	Speed governor	Mechanical
13	Cooling system	Water-cooled
14	Coolant capacity (engine only) (L)	8.00
15	Steady speed droop (%)	≤5%
16	Total lubrication system capacity (L)	9
17	Oil consumption (% of fuel)	<0.15%
18	Fuel consumption at 100% load (L/h)	5.6
19	Fuel consumption at 75% load (L/h)	4.5
20	Fuel consumption at 50% load (L/h)	3.3
21	Starter motor	24v
22	Dynamo	24v

**Alternator Specifications**

Compliance with GB755,BS5000,VDE0530,NEMAMG1-22,IED34-1,CSA22.2 and AS1359

1	Alternator model and Prime Power	PI144F/22KW
2	Alternator manufacturer	Stamford
3	Exciter type	Single bearing, Brushless, Self-excited
4	Rated speed	1500 RPM
5	Rated frequency	50 Hz
6	Phase	3
7	Rated voltage	400V
8	Power factor	0.8
9	Voltage adjust range	≥5%
10	Voltage regulation NL-FL	±1%
11	Insulation grade	H
12	Protection grade	IP23

**Alternator option**

Mecc Alte, Leroy Somer, Stamford copy


**Main Electrical Performance Data**

Voltage				Frequency			
Stable Regulation rate	Fluctuation	Recover time	Instantaneous Regulating rate	Stable regulation rate	Instantaneous regulating rate	Recover time	Fluctua-tion
+/-2.5%	0.5%	1.5s	+20%/-15%	+5%	+/-10%	5S	0.5%

## Diesel Generating Set TNCS-30G1

50Hz

### Control System

Deepsea (UK)	Model	DSE7320
Protection	Parameter	PHOTO
● Low oil pressure	● Volt	
● High water temp	● current	
● Over speed	● power	
● over crank	● speed	
● Over load	● frequency	
● Over/low volt		
● Over/low frequency		
● Battery charge failure		
	● oil pressure	
	● oil temp	
	● power factor	
	● running time	
	● water temp	
	● battery voltage	

### Option

#### Generator Set

- ☐ Trailer generator set
- ☐ ABB MCCB circuit breaker
- ☐ 50°C Radiator

#### Fuel system

- ☐ 12 hours base fuel tank
- ☐ 24 hours base fuel tank
- ☐ Dual wall base fuel tank
- ☐ External fuel tank

#### Exhaust system

- ☐ Residential exhaust silencer

#### Alternator

- ☐ PMG excitation
- ☐ Anti Condensation Heater

#### For cold area

- ☐ Water heater
- ☐ Oil heater
- ☐ Rapid water preheater (diesel burner)

#### Auto system

- ☐ Remote Control panel
- ☐ ATS control cabinet
- ☐ Paralleling System

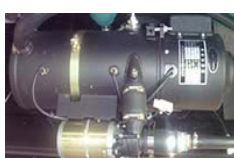
#### External ATS



#### 220V water heater



#### Diesel powered heater



#### 220V Oil heater Syn. Cabinet



#### Parker separator



TANON POWER reserves the right to change the specifications and design without notice.